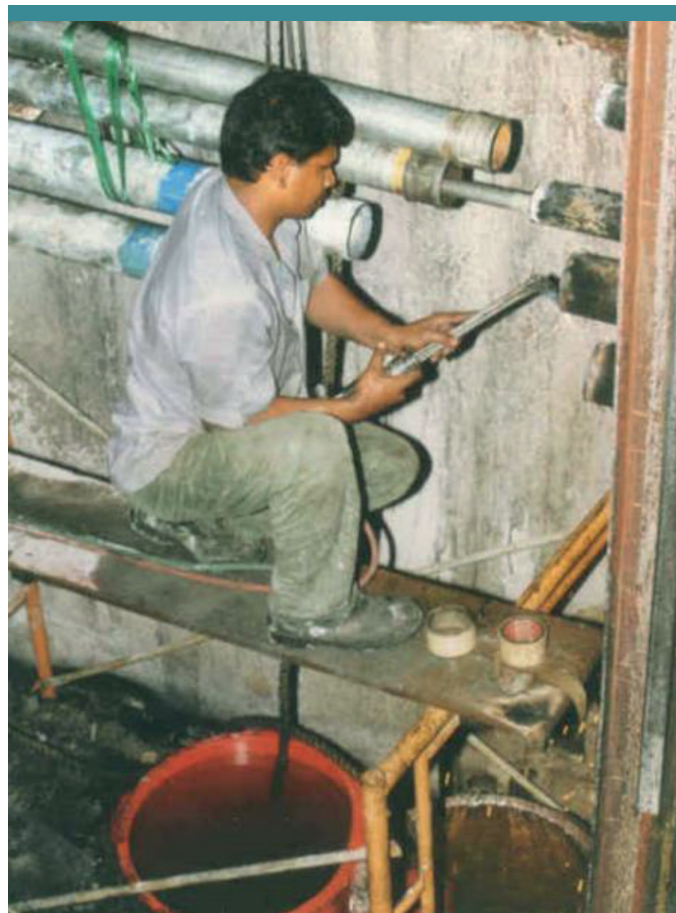


Talking Points: Hot Work Safety

FOR USE DURING ONBOARD SAFETY MEETINGS



QUESTIONS

- Q How many potential issues can you highlight with the operation in the above picture?
- Q What are the potential consequences?
- Q What does it say in your on board risk assessment and procedures concerning hot work?
- Q What does Code of Safe Working Practice say about hot work?
- Q What steps can you take in order to protect yourself from any hazards when conducting hot work?

ISSUE: 8 MAY 2017

Talking Points: Hot Work Safety

ANSWERS

Q How many potential issues can you highlight with the operation in the above picture?

- A**
- **PPE** – The worker should be wearing the correct PPE as per chapter 24 of the COSWP 24.4.
 - **Platform** – The work should be performed from a steady properly constructed platform.
 - **Fire Watch** – There is no fire watch present.
 - **Fire Extinguisher** – There is no fire extinguishing medium in the area.
 - **Hot Work Permit** – There should be a hot work permit on site with the worker.
 - **Barrier** – There is no apparent barriers or spark screens in place around the work area.
 - **Combustibles** – The area is not entirely free of combustibles
 - **Pipe Supports** – Pipe supports in use look inadequate for the operation.
 - **Lighting and Ventilation** – Possible inadequate lighting and ventilation for the space.

Q What are the potential consequences?

- A**
- Death.
 - Personal injury.
 - Serious damage to the vessel.
 - The potential for fire or explosion to occur.

Q What does it say in your on board risk assessment and procedures concerning hot work?

- A** Please refer to your company SMS and risk assessment for hot work.

Q What does Code of Safe Working Practice say about hot work?

- A** Please refer to Chapter 24 – Hot Work, this can be found [here](#).

Q What steps can you take in order to protect yourself from any hazards when conducting hot work?

- A**
- Ensure all persons involved are suitably qualified and experienced.
 - Always ensure that there are fire watches posted in suitable locations and on standby with a suitable fire fighting medium present.
 - All equipment should be confirmed as correctly maintained, in good condition and set up correctly with the relevant safety devices in place.
 - The area should have barriers in place, be well lit, well ventilated and free from combustible materials.
 - Ensure suitable hot work barriers such as screens are in place to arrest any sparks from the work.
 - Workers involved should have a documented tool box talk before commencing the task.

For further reference, also refer to our Loss Prevention Posters on safe use of oxygen and acetylene which can be found [here](#).