

Soft Skills

Situational Awareness



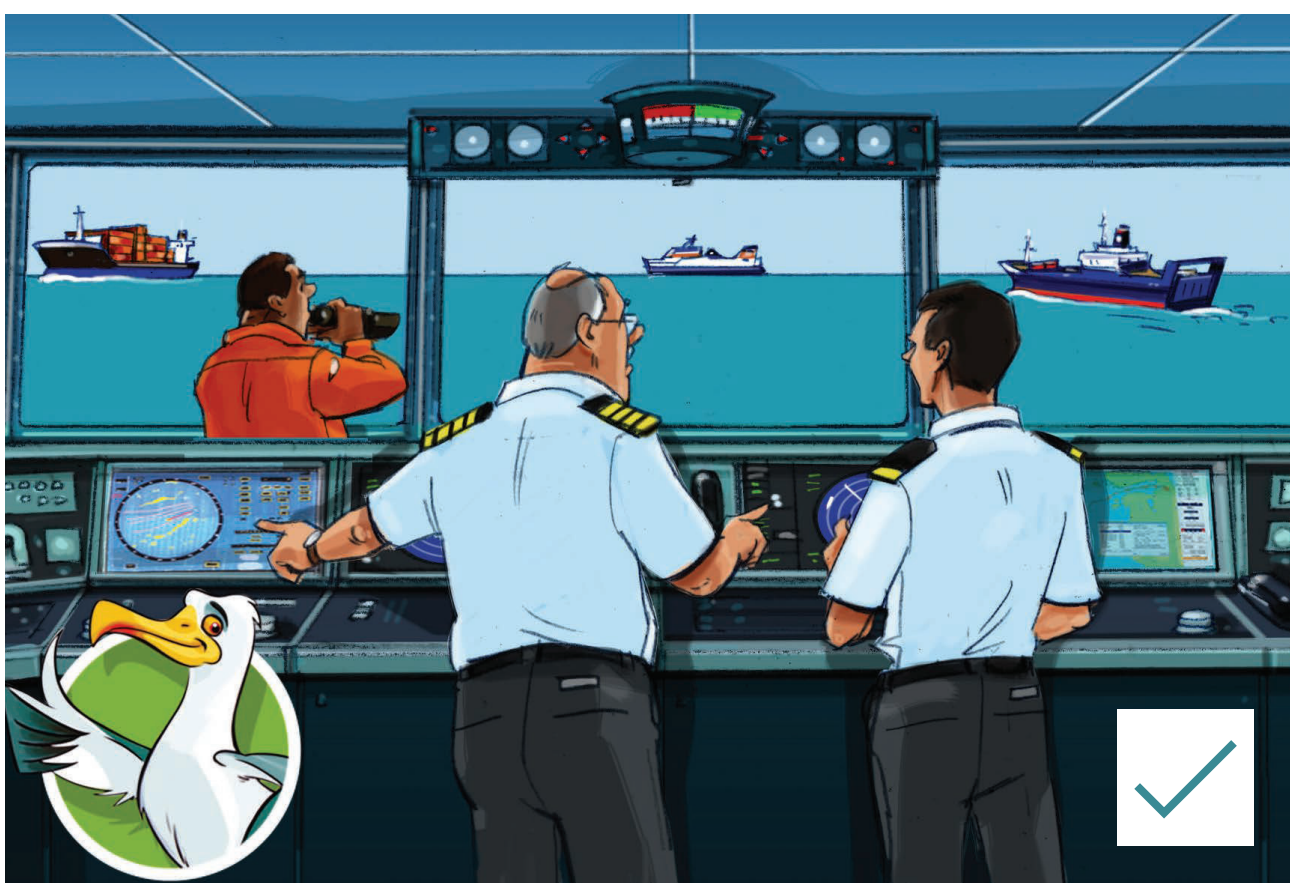
Safe navigation requires the collection, correct processing and prioritisation of information from a number of sources. The amount of information to be processed increases significantly when in an area of high traffic density or approaching port. Critical information can be missed or incorrectly assessed and ultimately lead to loss of awareness of the navigational situation. An individual is limited in the amount of information they can effectively gather and interpret. A bridge team allows workload to be shared and prevents critical information being missed. Below are some identified barriers to situational awareness and tips on ensuring safe navigation.

Barriers to situational awareness:

- Perception based on faulty information processing.
- Complacency.
- Overload.
- Fatigue.
- Poor communications.

Tips for safe navigation:

- Always be aware of your vessel's position in relation to its surroundings.
- Teams are better equipped to handle the complexities of the situation and overcome the barriers to situational awareness.
- Exercise bridge team management and encourage open communication.
- Strict adherence to procedures every time you are approaching port or a critical navigation area.
- Do not get distracted by unnecessary information.



Global service
built around you

POSTER: 4