

Global service  
built around you

**North**

# How to: an introduction to Route Risk Advice

# How to: an introduction to the Route Risk Advice App

## What is Route Risk Advice?

[Route Risk Advice](#) (RRA) is an application built into the [MyGlobeView](#) platform which allows users to draw an intended route or select an area of interest and generate a bespoke report based on the information relevant to that route or area. RRA will interrogate all data layers contained within MyGlobeView to identify the data applicable to the area of interest, this can then be filtered prior to the report being generated.

This How to Guide should be read in conjunction with the [How to Guide – An Introduction to MyGlobeView](#).

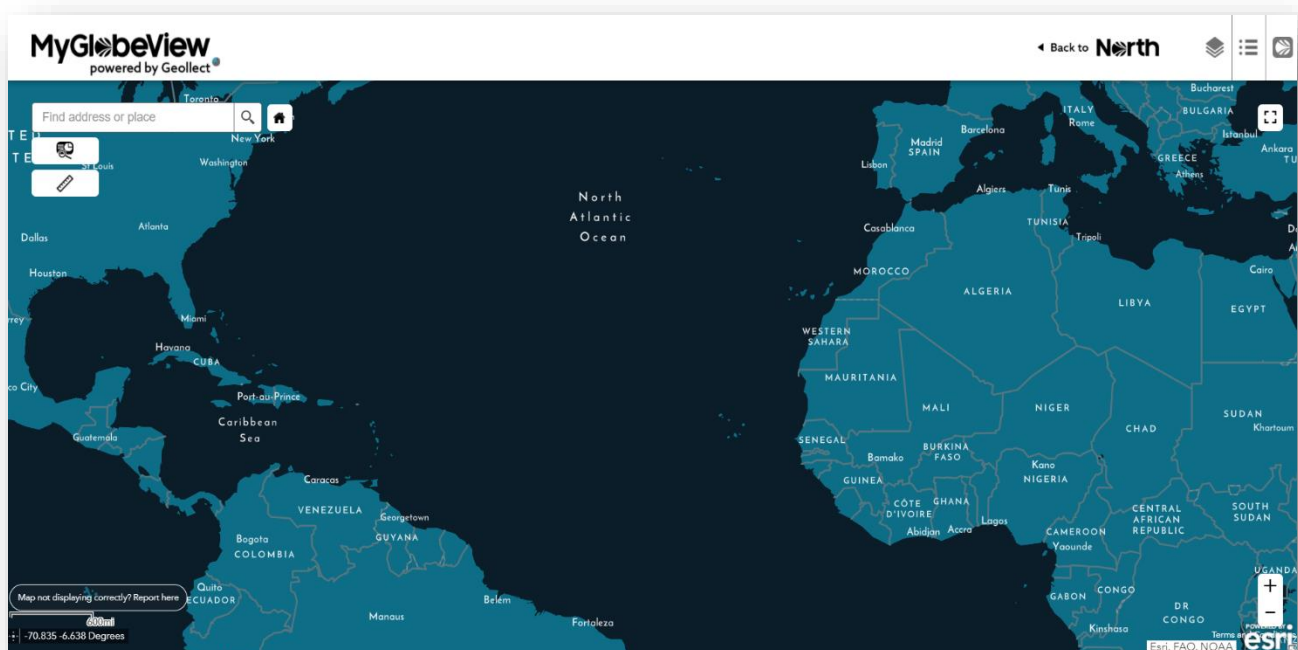
The information within RRA is sourced through North, in addition to our partner Geollect, an innovative geospatial intelligence company, which provides a synthesis of cutting-edge data feeds from public sources with proven advanced geospatial analysis. Geollect provides information, analysis and assessments relating to the commercial risks and physical threats ('enduring risks') faced by the shipping industry and seafarers, around the world. The physical and commercial risk information is provided by North and their global network of correspondents.

Daily updates also highlight 'current incidents' and JWC Listed Areas but no warranty or guarantee can be given as to the accuracy, timeliness or completeness of the information and other related content.

## Accessing Route Risk Advice

Access to RRA is available via the top-level navigation within MyGlobeView through the new Apps menu.

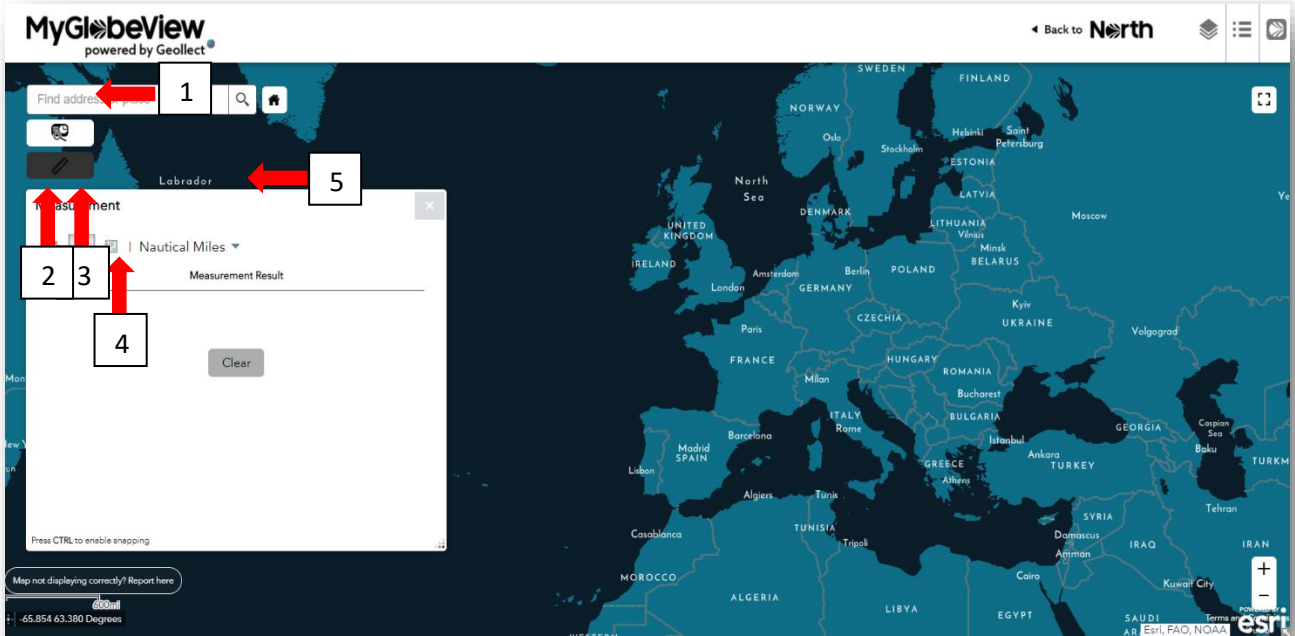
## Measurement Tool



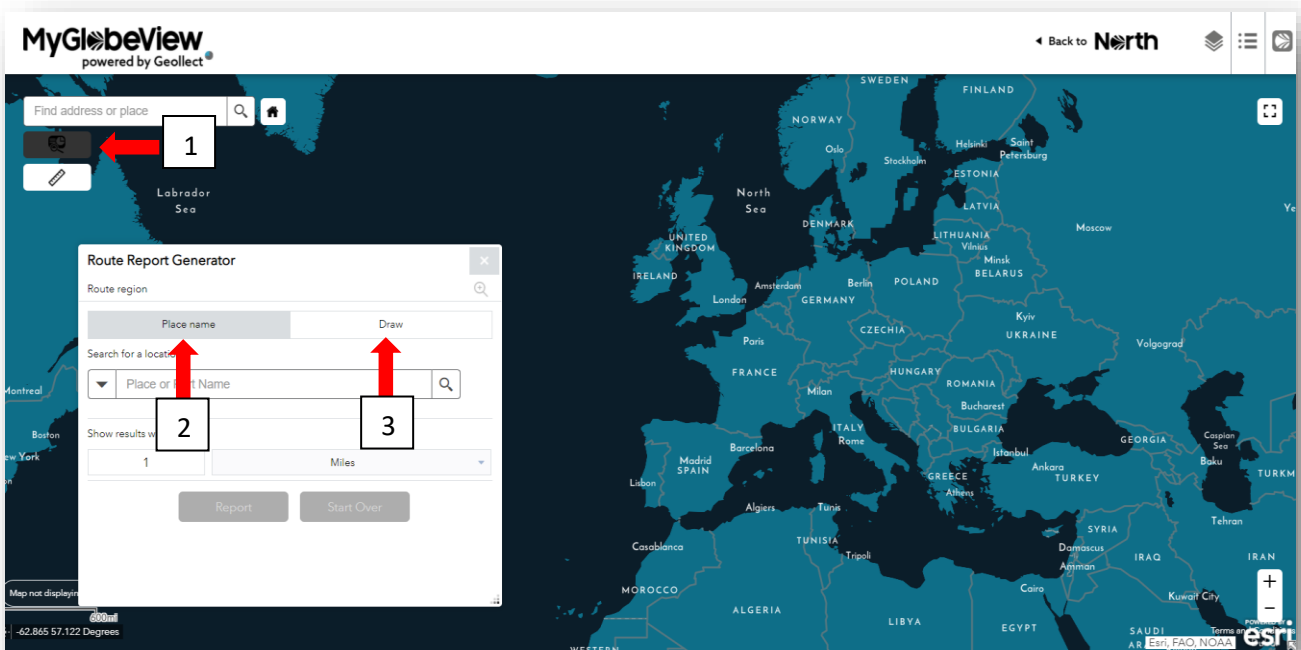
The RRA is equipped with a measurement tool (1) which allows you to measure an area (2), a distance between two points (3) or to determine the latitude and longitude of a point (4). Several options are available for the units of measurement (5).

## Route Report Generator

Selecting the Route Report Generator (1) option allows you to easily define the geographical area that your



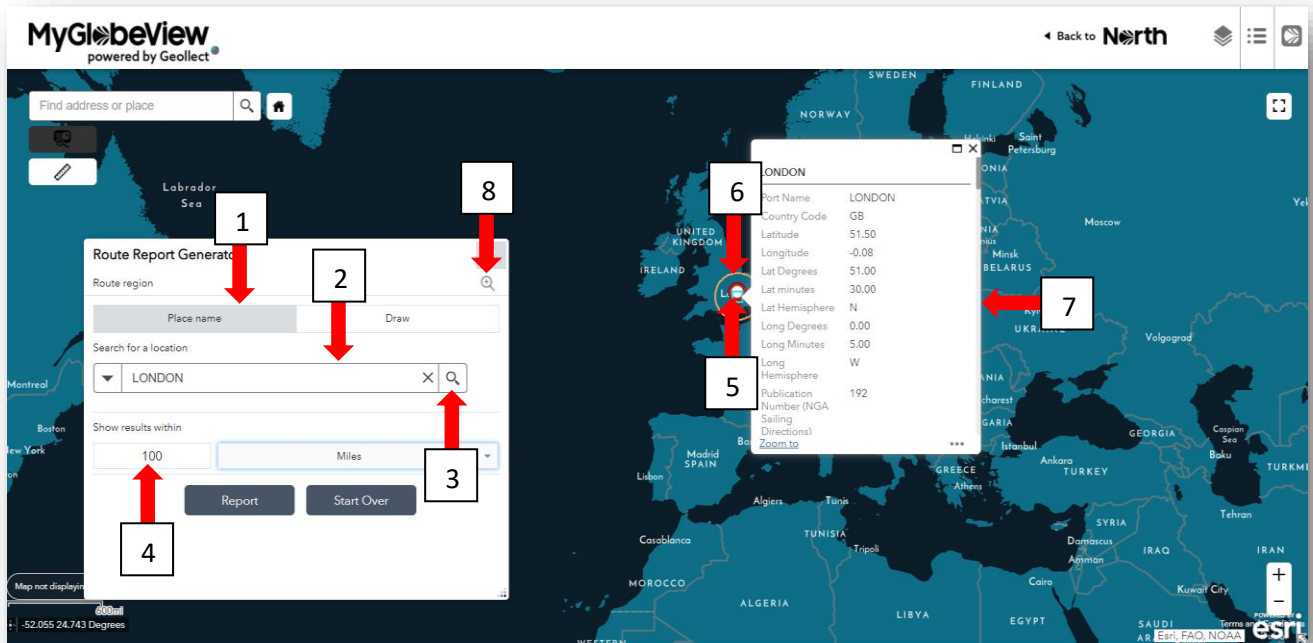
bespoke report will be based on by either selecting the place name (2) or draw option (3).



## Area Selection

### (a) Place Name

To select an area using the place name option (1) enter the place in the search bar (2), a selection of choices for this place should automatically appear in a drop down or use the search icon (3), specify the distance from this point that you would like to show results within (4). A marker (5) will be placed on the selected place with a corresponding ring (6) at the distance specified, additional geographical information relating to the place will be shown in a popup (7). If the place marker is outside of the visible screen area press the zoom to location icon to jump to the selected place (8). Generating the report will be covered in a later section.



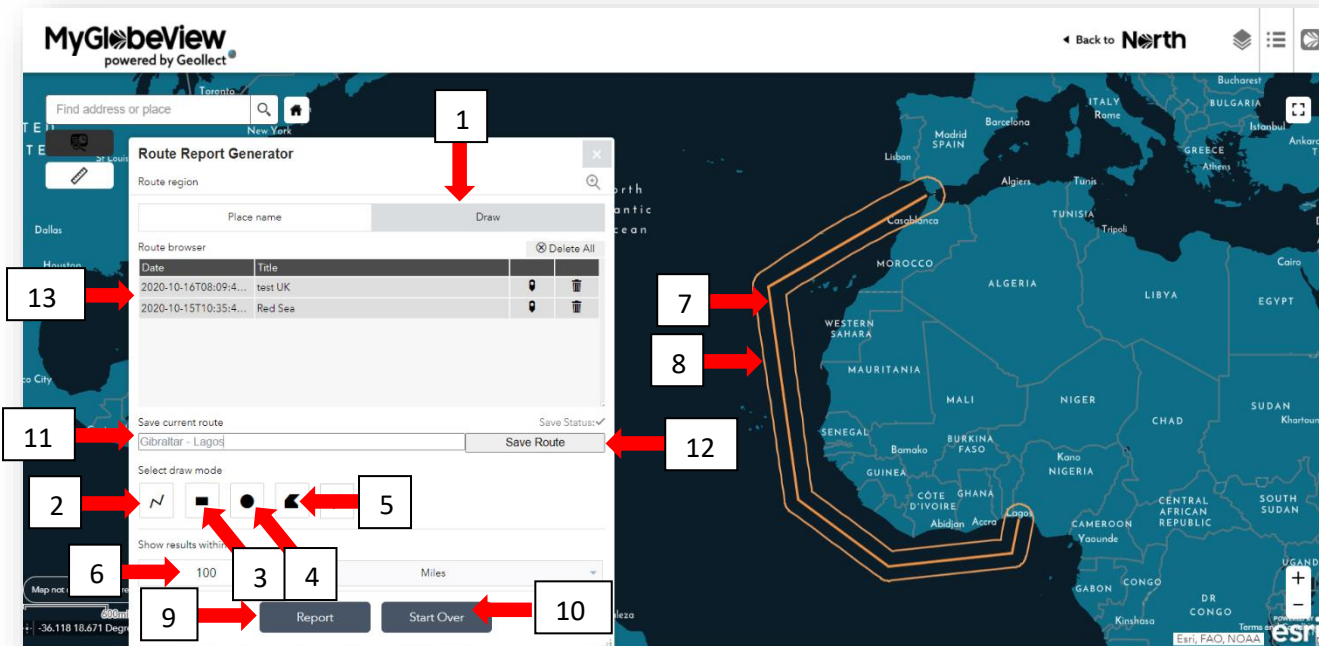
### (b) Draw

To select an area using the draw function (1), first select one of the drawing tool options. Select either polyline draw mode to enter a route (2), the extent draw mode (3), the circle draw mode (4) or the polygon draw mode (5) specify the distance from this point that you would like to show results within (6). The route or area (7) will be shown on the map with a corresponding buffer (8) at the distance specified. Once the route has been drawn or area selected the report can be generated (9). If you make a mistake with the area drawn / selected, simply click start over (10) which will clear your selection.

### (c) Saving Your Routes

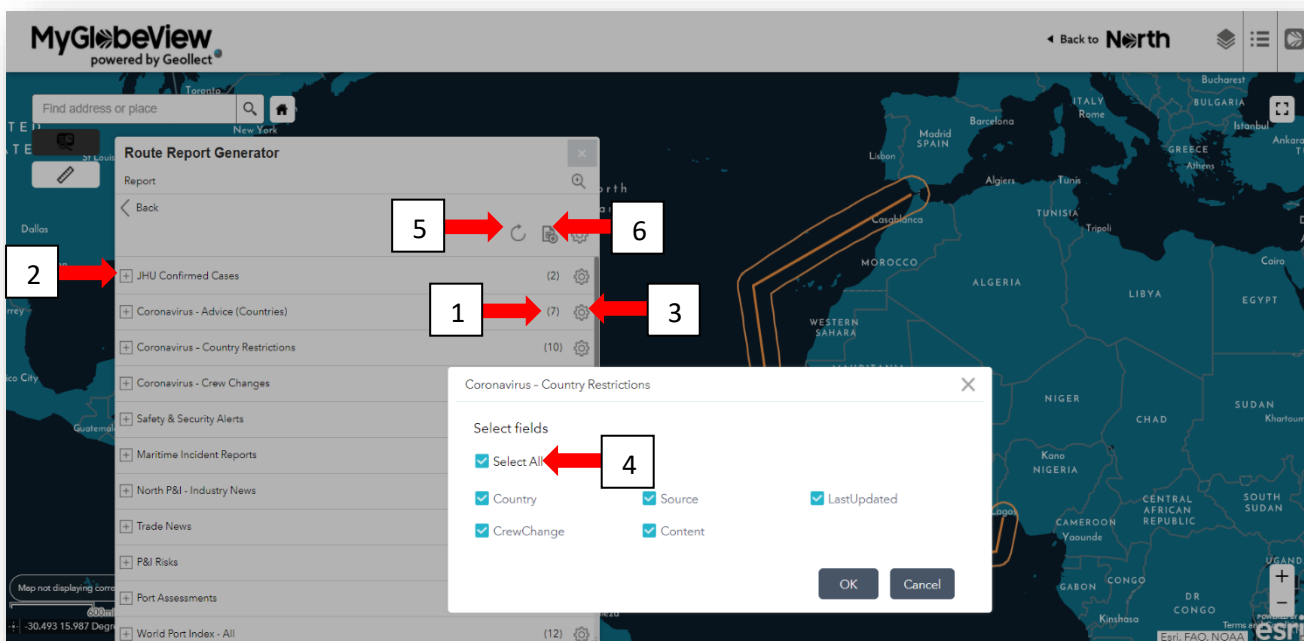
Once the route or area has been drawn this can be named (11) and saved (12). Saved routes can be reloaded from the route browser (13).

If you return to the platform and open a previously saved route, the information generated in your report will be up-to-date based on the time you generate your new report. This means you can then compare downloaded reports, for the same route, at different times.



## Generating a Report

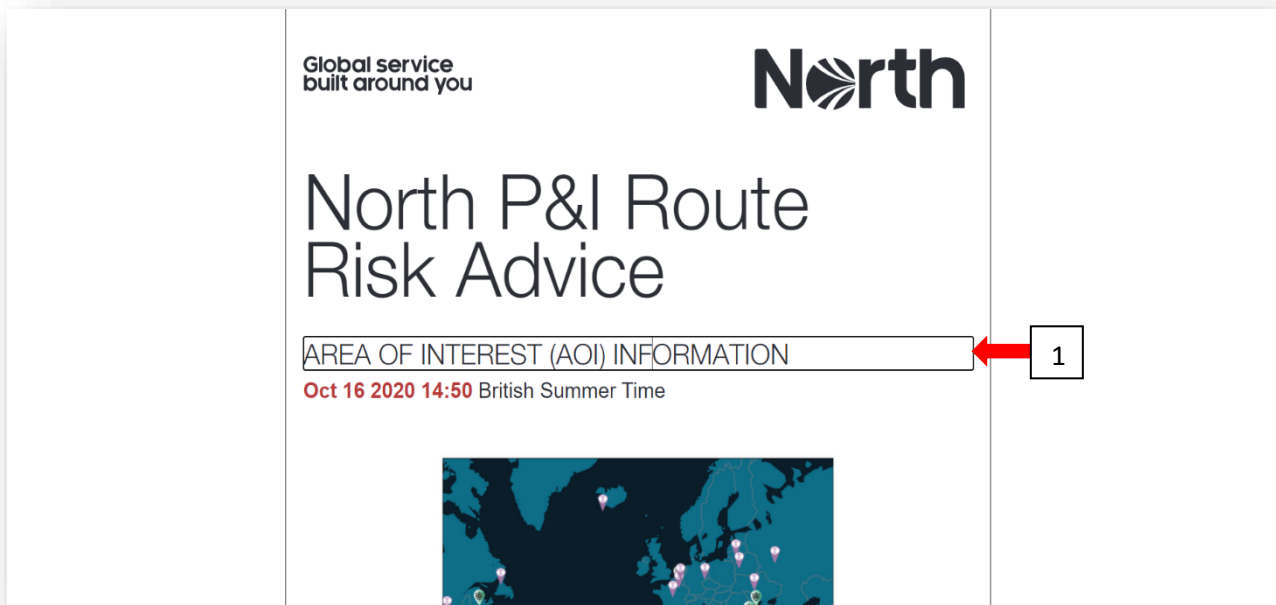
Once the route or area has been selected, the report generator will interrogate all data layers on MyGlobeView and filter the information relevant to the selected area. The number of responses for each data layer is shown (1) and further information on these can be accessed by expanding the relevant data layer (2). The information to be included in the report can be customised for each layer using the cog icon (3), this function also allows data layers to be excluded from the report (4). **NB: Any layers or attributes which have been deselected will need to be manually selected for inclusion in future reports.** Once layers or attributes have been deselected refresh the data (5) prior to generating the report (6).



## The Route Risk Advice Report

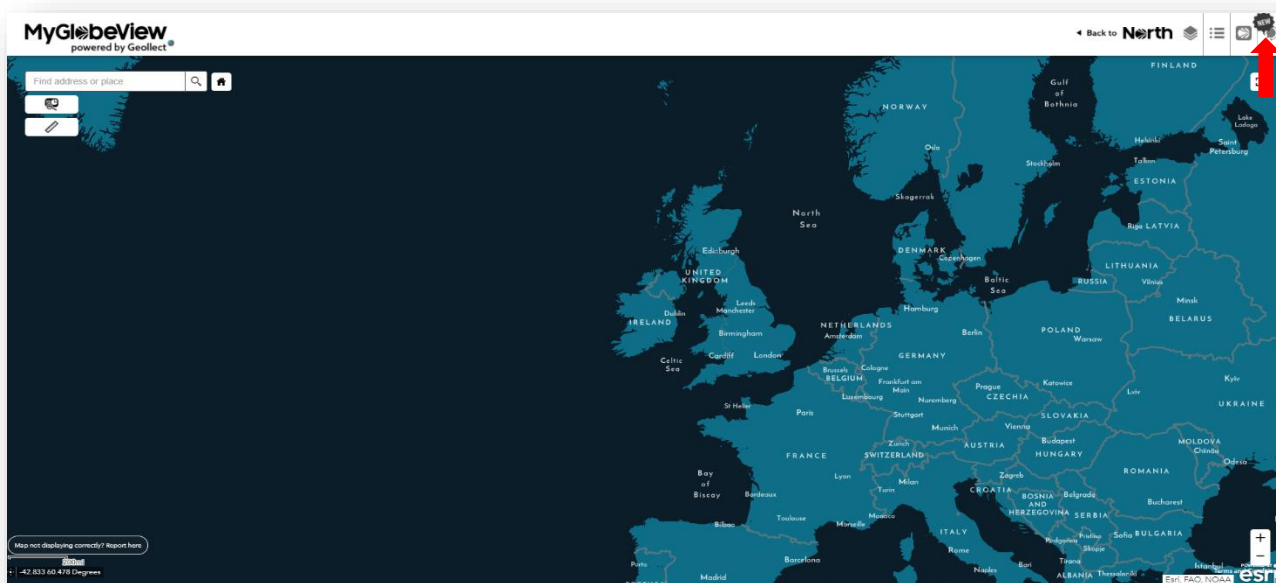
Once the generate report button has been selected the system will start to collate and format all the information into the final report. **NB: depending on the amount of information to be included in the report it can take some time to generate, several minutes if a significant amount of information is selected.**

The title of the report can be edited (1) to suit your requirements, prior to the report being printed or saved as a .pdf.

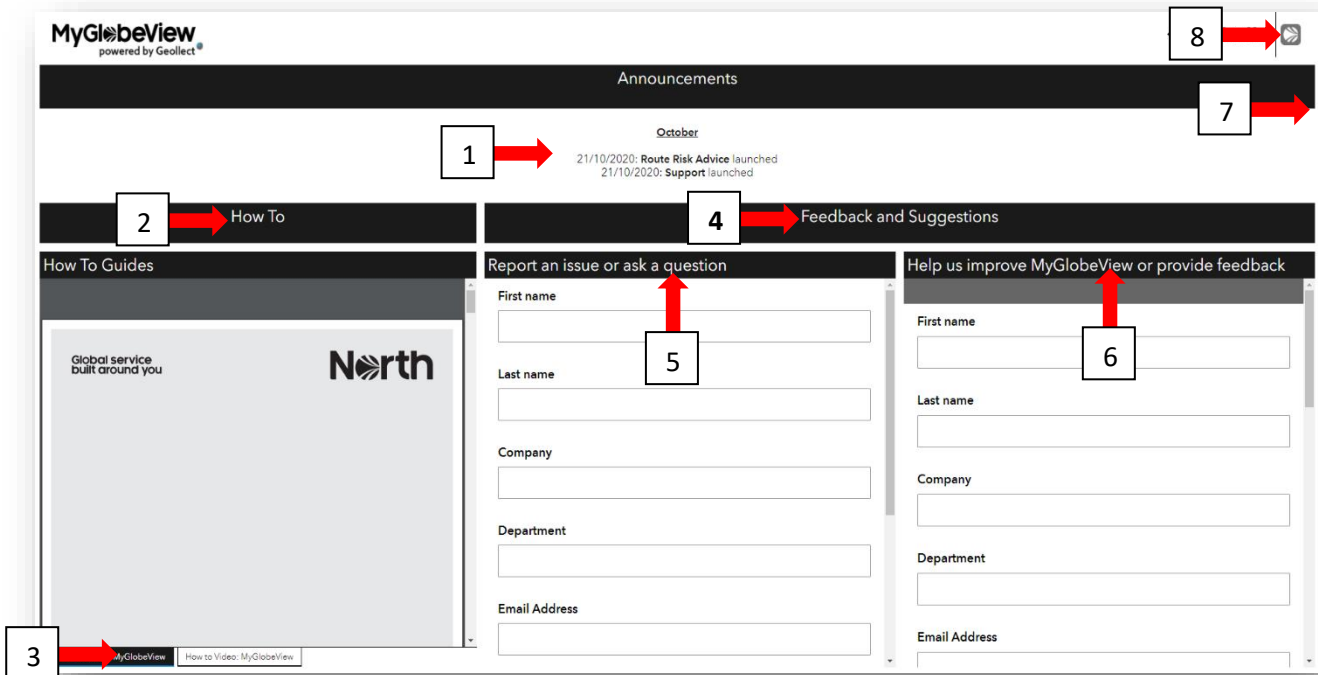


## Support

A [support page](#) has been added which is available via the top-level navigation within MyGlobeView through the new support menu.



The support page contains an announcements section (1) where information relating to the addition of new layers or functionality and updates regarding the status of the system can be found, a how to section (2) where how to guides and videos (3) can be accessed, a feedback and suggestions section (4) where issues can be reported or users can ask questions relating to the platform (5), feedback and suggestions for improvements or future developments can be submitted (6). Each section of the support page can be expanded using the full screen icon in the top right corner of each section (7). You can return to the RRA or to MyGlobeView using the apps menu (8).



## Further information

If you have any questions about MyGlobeView or the Route Risk Advice app, please email [Globeview@nepia.com](mailto:Globeview@nepia.com).

Last updated: 19 October 2020

# Connect

 [www.nepia.com](http://www.nepia.com)

 [@NorthPandiClub](https://twitter.com/NorthPandiClub)

 [NorthPandiClub](https://www.facebook.com/NorthPandiClub)

 [The North of England P&I Association Limited](https://www.linkedin.com/company/the-north-of-england-p-i-association-limited)

 [North P&I Club](https://www.youtube.com/channel/UC...)