

Global service
built around you

North

How to: an introduction to GlobeView

How to: an introduction to GlobeView

What is GlobeView?

[GlobeView](#) is a freely available 3D interactive geographical information platform providing port information, sanctions updates, selected weather reports and maritime threats and incidents.

A breakdown of the differences between GlobeView and our Member and broker exclusive portal MyGlobeView, is shown below.

GlobeView	MyGlobeView
<ul style="list-style-type: none">• Free to all• 10 data sources, including:<ul style="list-style-type: none">✓ Enduring and current risks✓ World Sanctions✓ Port assessments✓ Basic hurricane information✓ Maritime security charts	<ul style="list-style-type: none">• Exclusively for North entered Members and correspondents• Personalised data layers• Over 30 regularly updated data sources, including all the data sources from GlobeView in addition to:<ul style="list-style-type: none">✓ Detailed safety alerts and reports✓ News feed✓ Additional trading and commercial risks✓ Richer port information including port infrastructure points, lines and areas✓ Meteorological information, highlighting tidal patterns and active hurricanes✓ Travel advice from the UK, USA, Australia and Canada✓ Our First Call contact information for USA ports

The information is sourced through our partner [Geollect](#), an innovative geospatial intelligence company, which provides a synthesis of cutting-edge data feeds from public sources with proven advanced geospatial analysis. Geollect provides information, analysis and assessments relating to the commercial risks and physical threats ('enduring risks') faced by the shipping industry and seafarers, around the world. The physical and commercial risk information is provided by [Gray Page](#), a specialist maritime consulting group, with wide ranging expertise in providing intelligence services, investigating cargo theft, losses, damage and fraud.

Daily updates also highlight 'current incidents' and JWC Listed Areas but no warranty or guarantee can be given as to the accuracy, timeliness or completeness of the information and other related content.

Finding Your way Around GlobeView

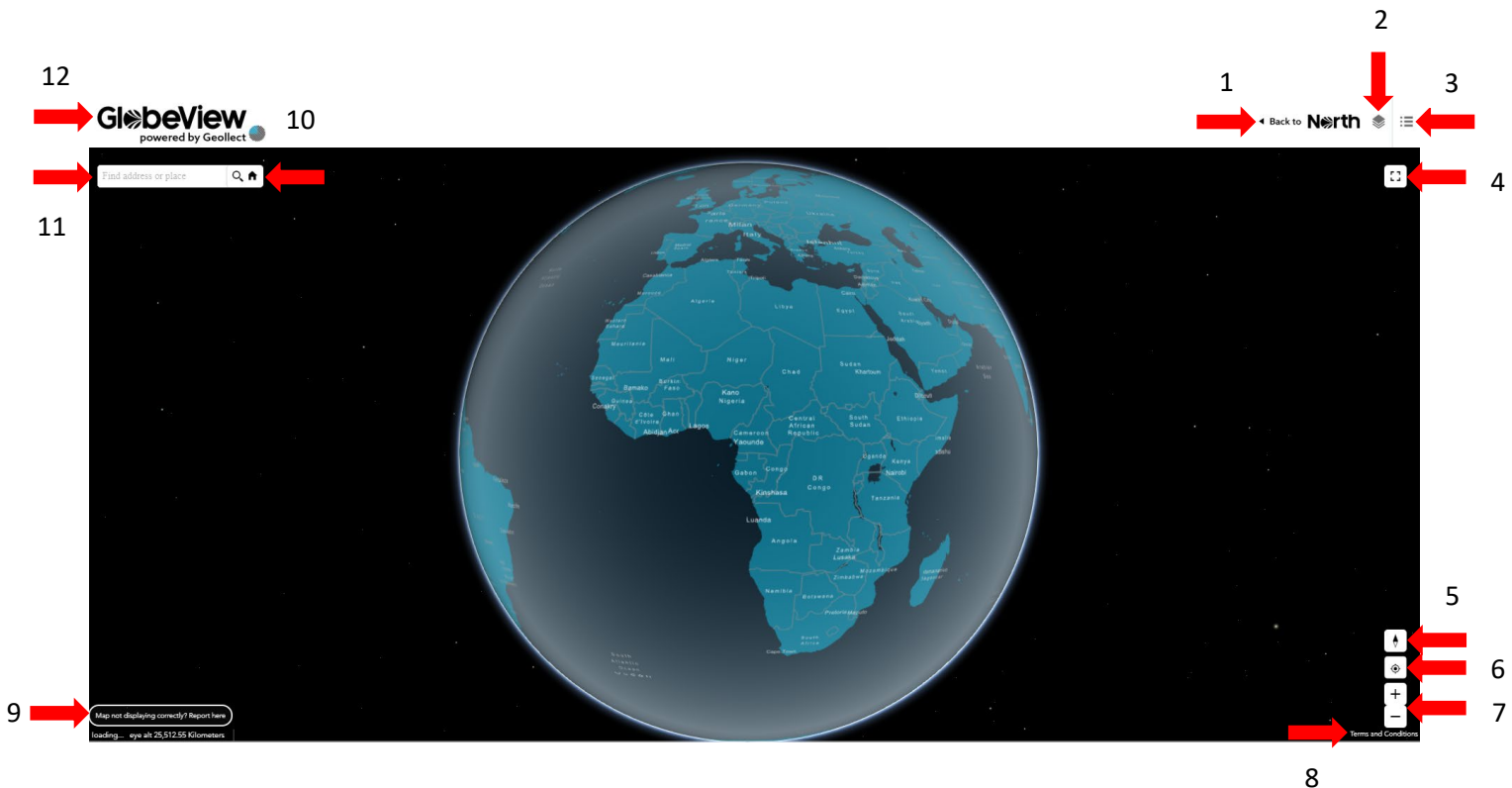
GlobeView is a very easy to use tool. Just use your mouse, or finger if using a touch screen device, to move and manipulate the globe.

GlobeView is fully responsive on all mobile devices with a Wi-Fi or '4G' mobile connection.

Overview

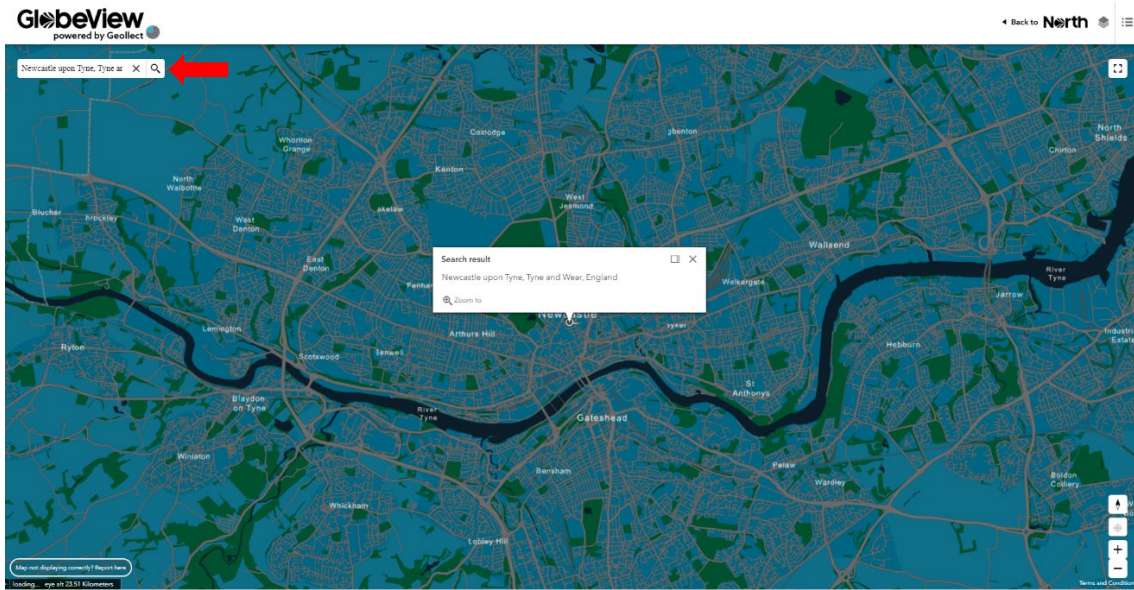
The available functionality is explained below (clockwise direction):

1. Return to the homepage.
2. The available data layers.
3. Legend – the map symbols defined.
4. View in full screen mode.
5. Reset the compass orientation.
6. Map will display your current location (if you allow location access).
7. Zoom in or out.
8. Read the GlobeView terms and conditions here.
9. Report issues.
10. Return GlobeView to the default starting position.
11. Search for a specific location.
12. You are viewing the GlobeView dashboard.

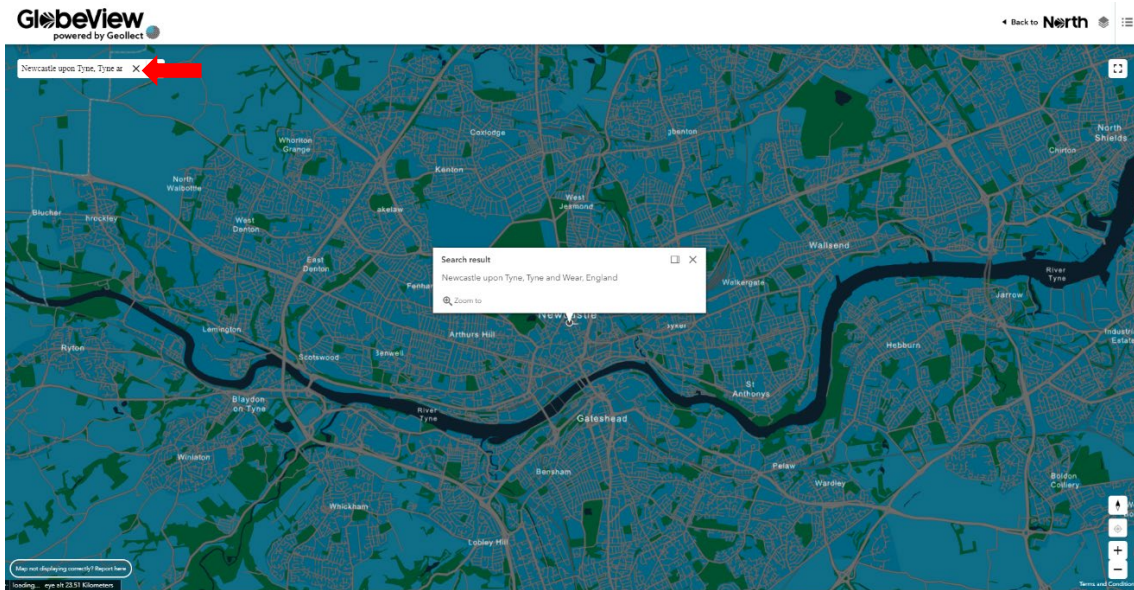


1. The Search Function

- a. Searching for a specific location is very easy. Just type in your location and press the magnifying glass.



- b. To return to the start location, press 'X' to clear your search and then select the 'home' icon. *The home icon will appear after you have cleared your search.*



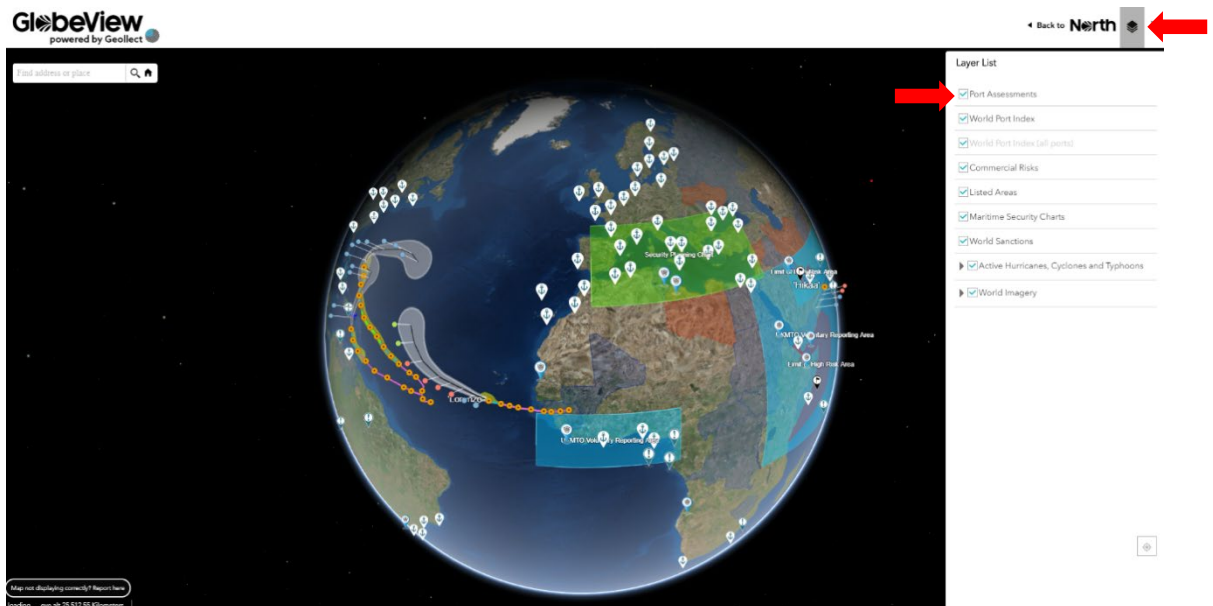
2. The Data Layers

GlobeView has the following publicly available layers:

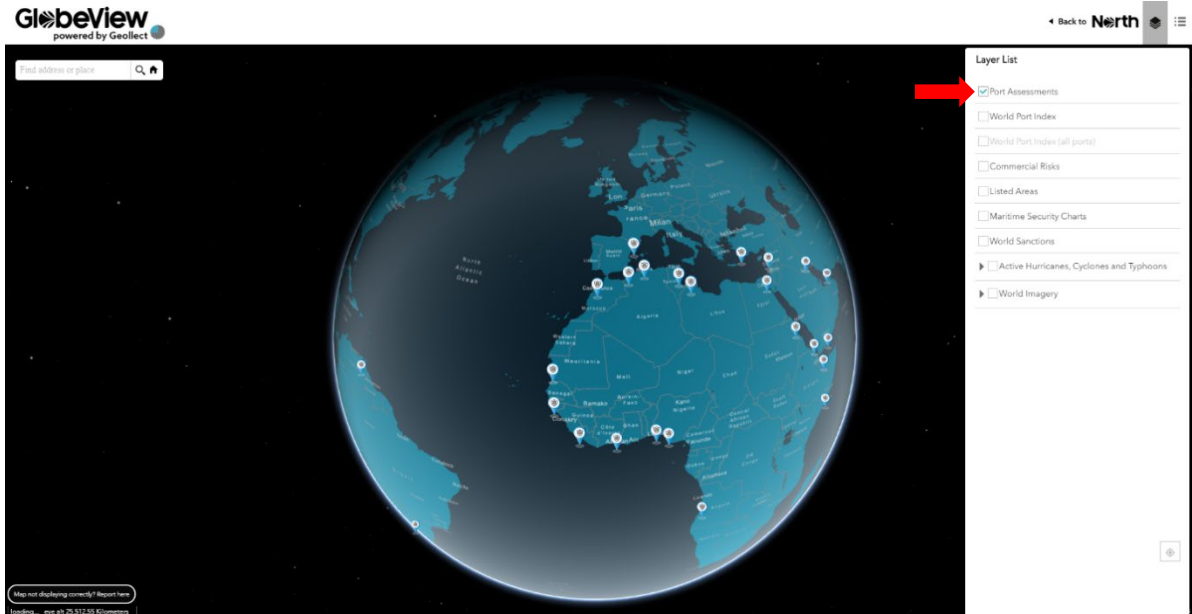
- a. **Port Assessments** – detailed information on selected ports.
- b. **World Port Index** – key data on ports around the world.
- c. **Commercial Risks** - the commercial risks and physical threats ('enduring risks') faced by the shipping industry and seafarers, around the world.
- d. **Listed areas** – areas identified by the Lloyd's Joint War Risk Committee.
- e. **Maritime Security Charts** – Admiralty 'Q-Series' Maritime Security Information Charts'
- f. **World Sanctions** – country specific sanction information.
- g. **Active Hurricane, Cyclones and Typhoons** – information on the severity of specific storms.
- h. **World Imagery** – satellite imagery of regions / locations you are interested in.

Further, more detailed, information layers are available on MyGlobeView.

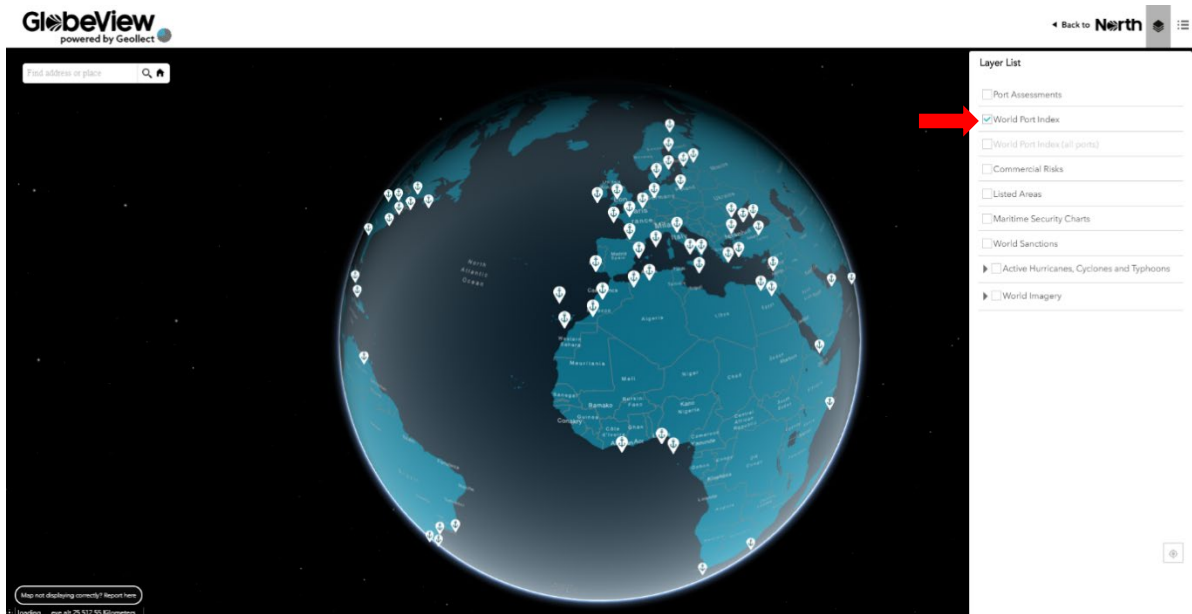
Each data layer can be switched on or off using the layer list on the menu bar and selecting the tick boxes.



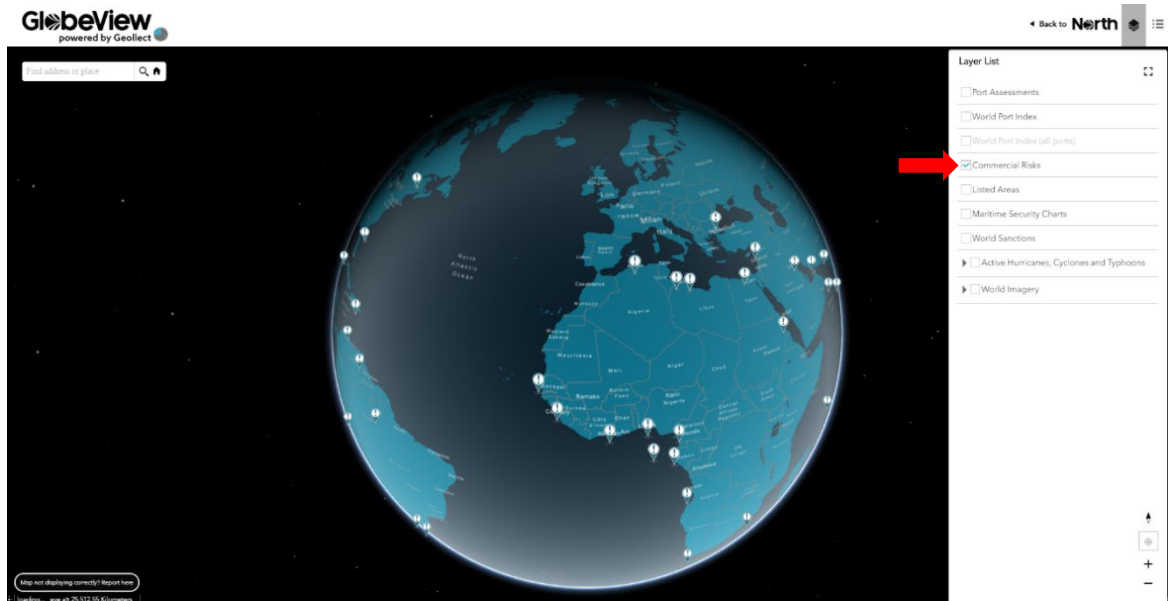
a. Port Assessments



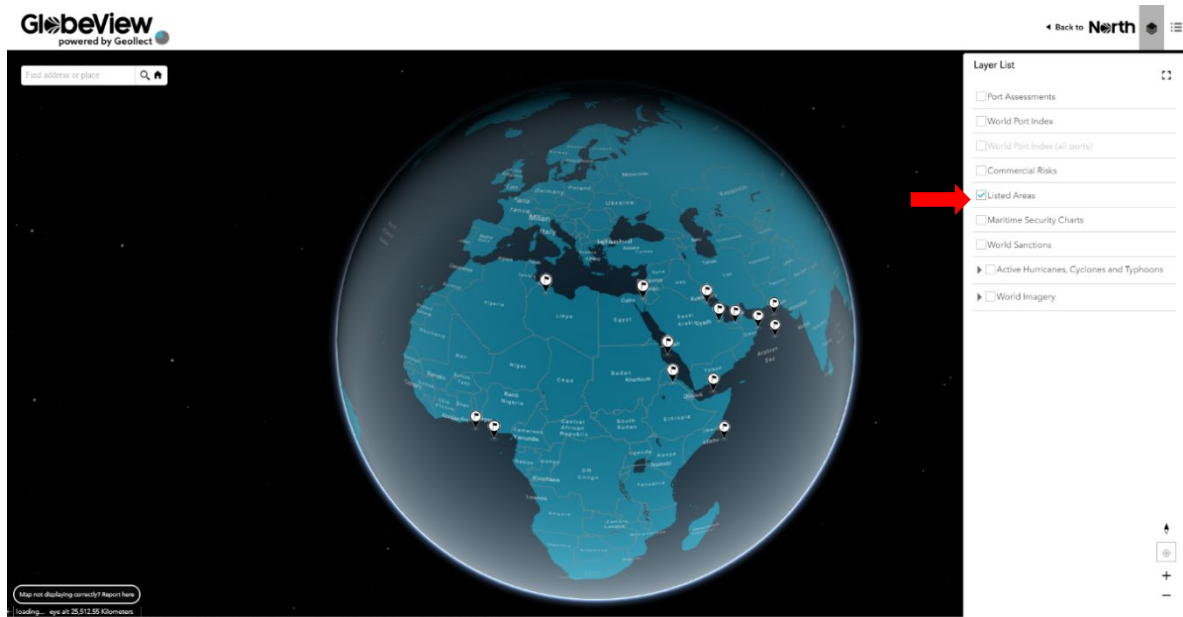
b. World Port Index



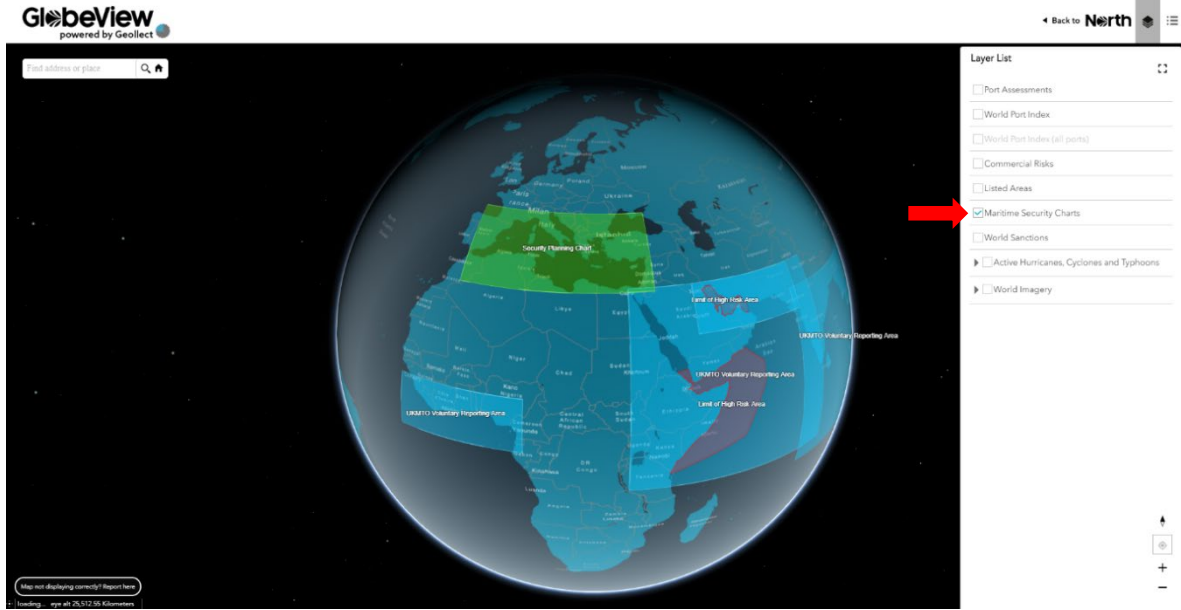
c. Commercial Risks



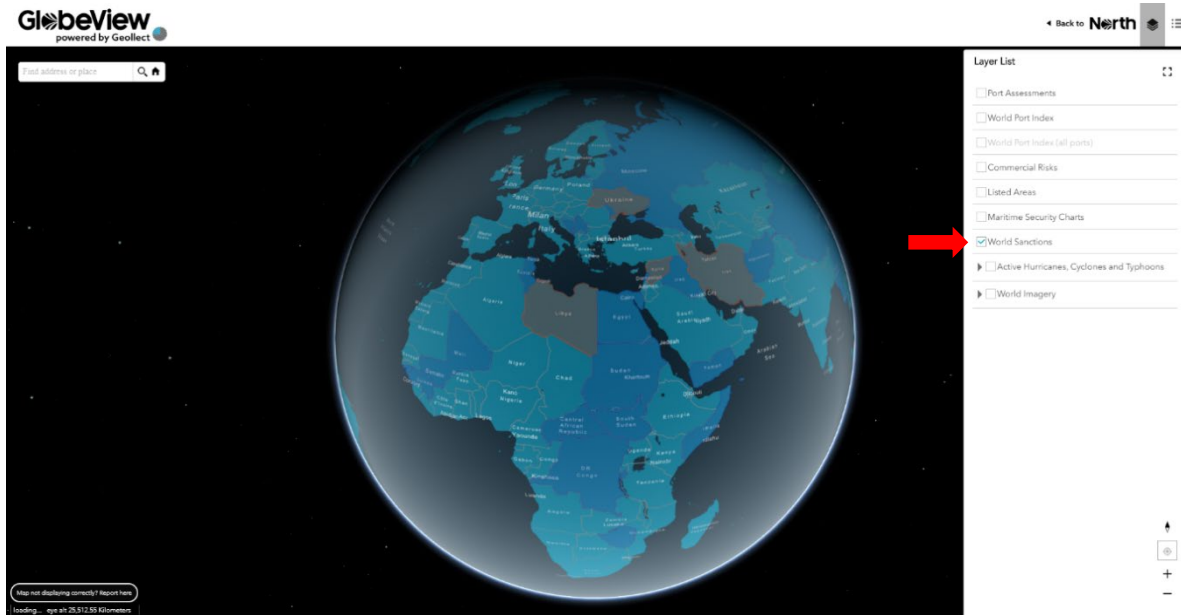
d. Listed areas



e. Maritime Security Charts



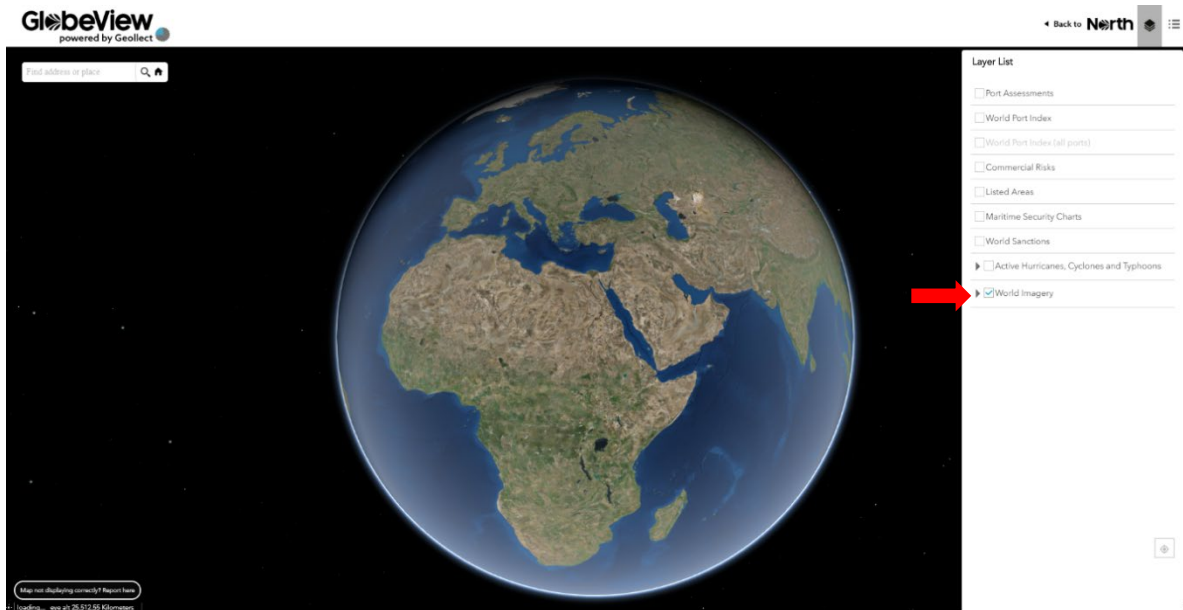
f. World Sanctions



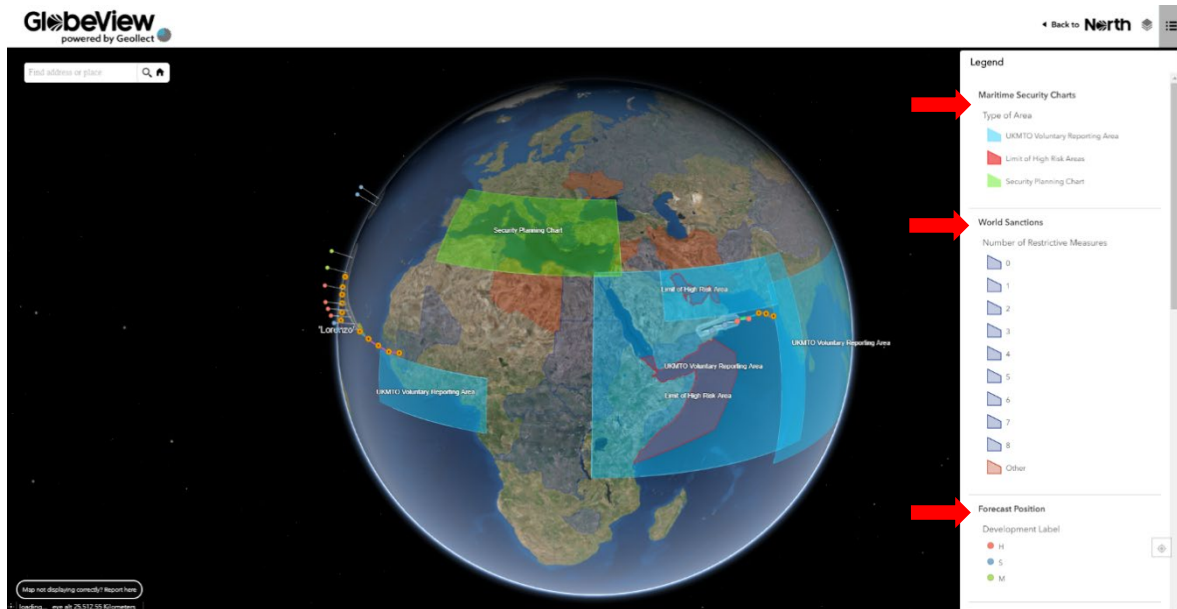
g. Active Hurricane, Cyclones and Typhoons



h. World Imagery



3. Legend



4. Map Not Displaying Correctly?

- a. If your map is not displaying properly, you can let us know by clicking on the reporting button



Further information

If you have any questions about GlobeView, please email Globeview@nepia.com.

Last updated: 27 January 2020

Connect

 www.nepia.com

 [@NorthPandiClub](https://twitter.com/NorthPandiClub)

 [NorthPandiClub](https://www.facebook.com/NorthPandiClub)

 [The North of England P&I Association Limited](https://www.linkedin.com/company/the-north-of-england-p-i-association-limited)

 [North P&I Club](https://www.youtube.com/channel/UC...)