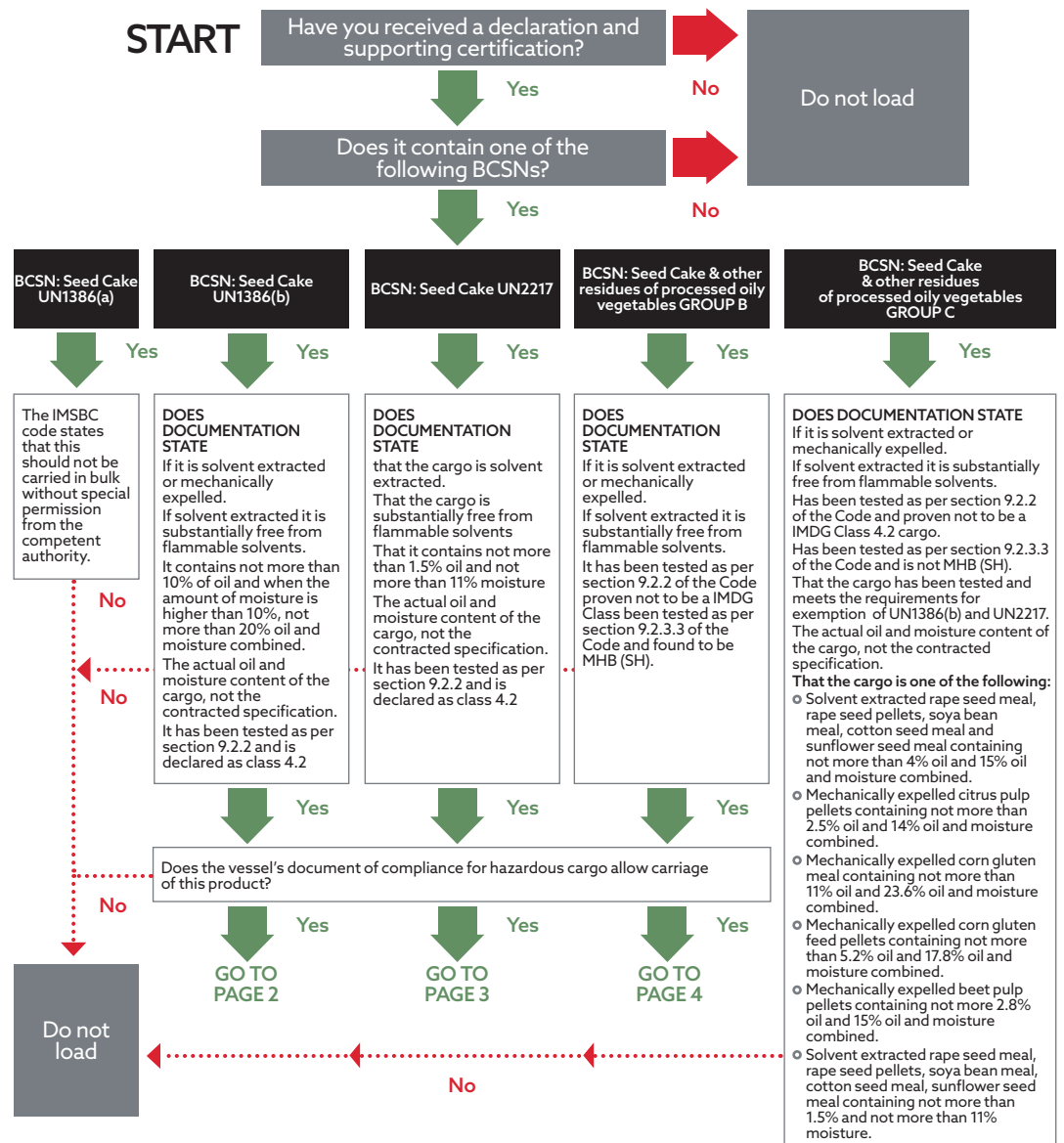


Cargo Care Checklist: Seed Cake

ACTION TO BE TAKEN WHEN DEALING WITH SEED CAKE

Seed Cake examples include: Soya bean meal, sunflower seed meal, expeller, palm kernel expeller and pellets. This checklist should be used in conjunction with the ship operator's procedures and the IMSBC code.



Note:

Consider appointing a local surveyor to assist with document checks and cargo inspection/monitoring.
Actual oil and moisture content and exemptions may be provided on separate documents.
All references to the IMSBC code Amendment 05-19 (2020 Edition)
MHB(SH) - Material Hazardous in Bulk Self Heating.
Class 4.2 - Flammable solids (as per IMDG Code).

Cargo Care Checklist: Seed Cake (cont.)

ACTION TO BE TAKEN WHEN DEALING WITH SEED CAKE

Seed Cake examples include: Soya bean meal, sunflower seed meal, expeller, palm kernel expeller and pellets. This checklist should be used in conjunction with the ship operator's procedures and the IMSBC code.

Seed Cake 1386(b)

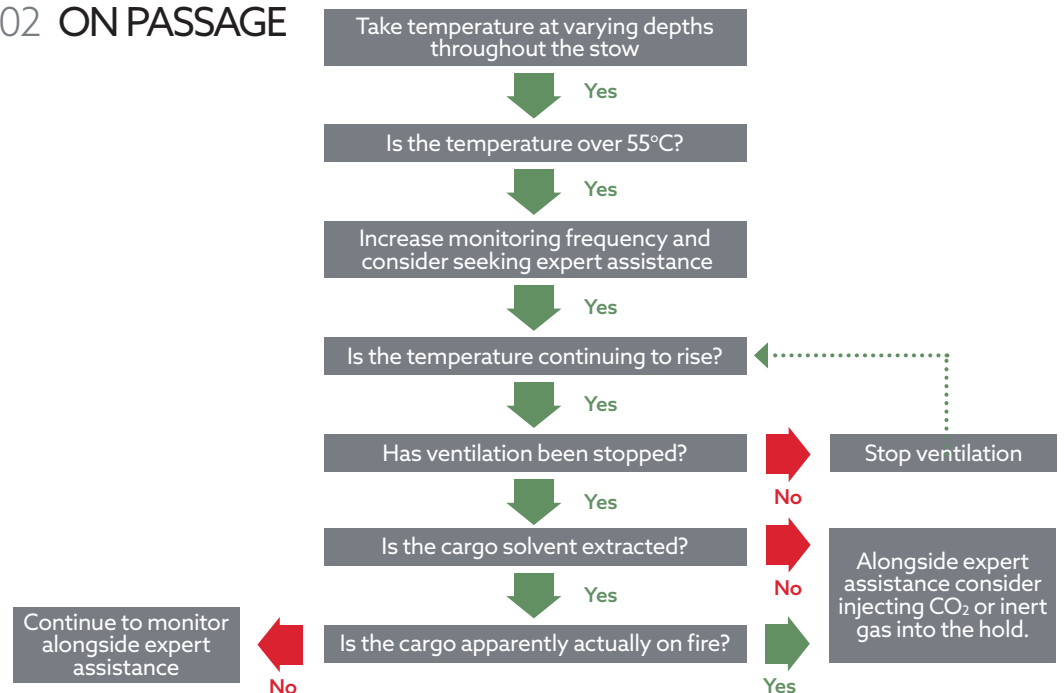
01 PRIOR TO LOADING

- Holds are clean and dry
- Hatches confirmed as weathertight
- Bilges are dry and non return valves confirmed as operational
- Equipment and procedures in place to enable crew to check the cargo temperature at various depths in the stow
- If the planned interval between the commencement of loading and the completion of final discharge exceeds 5 days, the cargo must be carried in a cargo hold equipped with carbon dioxide or inert gas systems
- Electrical equipment in the vicinity of the cargo suitable for use in an explosive atmosphere
- Hold lighting electrically isolated
- No smoking signs posted on deck
- Cargo hold vents fitted with spark arresting screens

Note:

Cargo should not be loaded in precipitation.

02 ON PASSAGE



Note:

Use surface ventilation as required to prevent sweat.

Warning

Be aware of the increased risk of self-heating if using mechanical ventilation.

DO NOT enter holds or adjacent spaces until they are known to be safe!

Cargo Care Checklist: Seed Cake (cont.)

ACTION TO BE TAKEN WHEN DEALING WITH **SEED CAKE**

Seed Cake examples include: Soya bean meal, sunflower seed meal, expeller, palm kernel expeller and pellets. This checklist should be used in conjunction with the ship operator's procedures and the IMSBC code.

Seed Cake UN2217

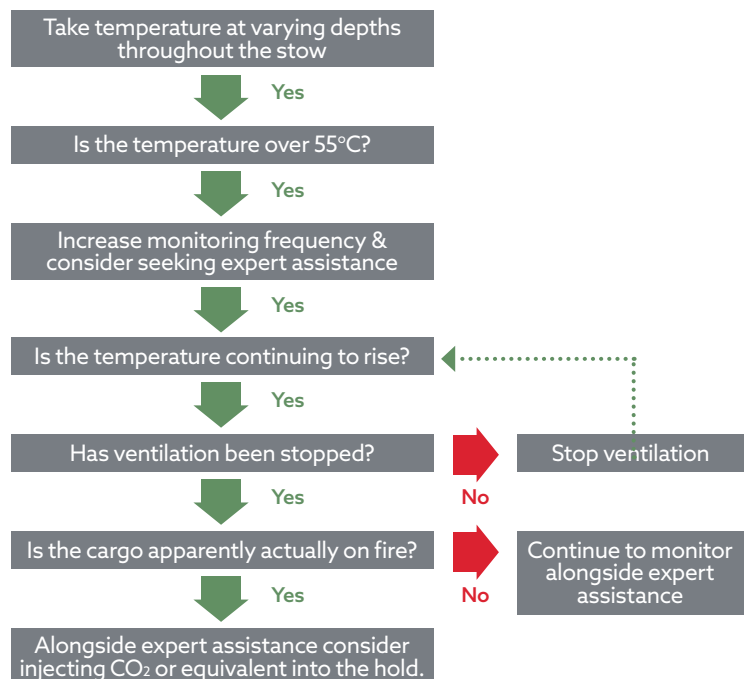
01 PRIOR TO LOADING

- Holds are clean and dry
- Hatches confirmed as weathertight
- Bilges are dry and non return valves confirmed as operational
- Equipment and procedures in place to enable crew to check the cargo temperature at various depths in the stow
- If the planned interval between the commencement of loading and the completion of final discharge exceeds 5 days, the cargo must be carried in a cargo hold equipped with carbon dioxide or inert gas systems
- Electrical equipment in the vicinity of the cargo suitable for use in an explosive atmosphere
- Hold lighting electrically isolated
- No smoking signs posted on deck
- Cargo hold vents fitted with spark arresting screens

Note:

Cargo should not be loaded in precipitation.

02 ON PASSAGE



Note:

Use surface ventilation as required to prevent sweat.

Warning

Be aware of the increased risk of self-heating if using mechanical ventilation.

DO NOT enter holds or adjacent spaces until they are known to be safe!

Cargo Care Checklist: Seed Cake (cont.)

ACTION TO BE TAKEN WHEN DEALING WITH SEED CAKE

Seed Cake examples include: Soya bean meal, sunflower seed meal, expeller, palm kernel expeller and pellets. This checklist should be used in conjunction with the ship operator's procedures and the IMSBC code.

Disclaimer

The purpose of this publication is to provide a source of information which is additional to that available to the maritime industry from regulatory, advisory, and consultative organisations. Whilst care is taken to ensure the accuracy of any information made available no warranty of accuracy is given and users of that information are to be responsible for satisfying themselves that the information is relevant and suitable for the purposes to which it is applied. In no circumstances whatsoever shall North be liable to any person whatsoever for any loss or damage whatsoever or howsoever arising out of or in connection with the supply (including negligent supply) or use of information.

Unless the contrary is indicated, all articles are written with reference to English Law. However it should be noted that the content of this publication does not constitute legal advice and should not be construed as such. Members should contact North for specific advice on particular matters.

Seed Cakes and Other Residues of Processed Oily Vegetables GROUP B

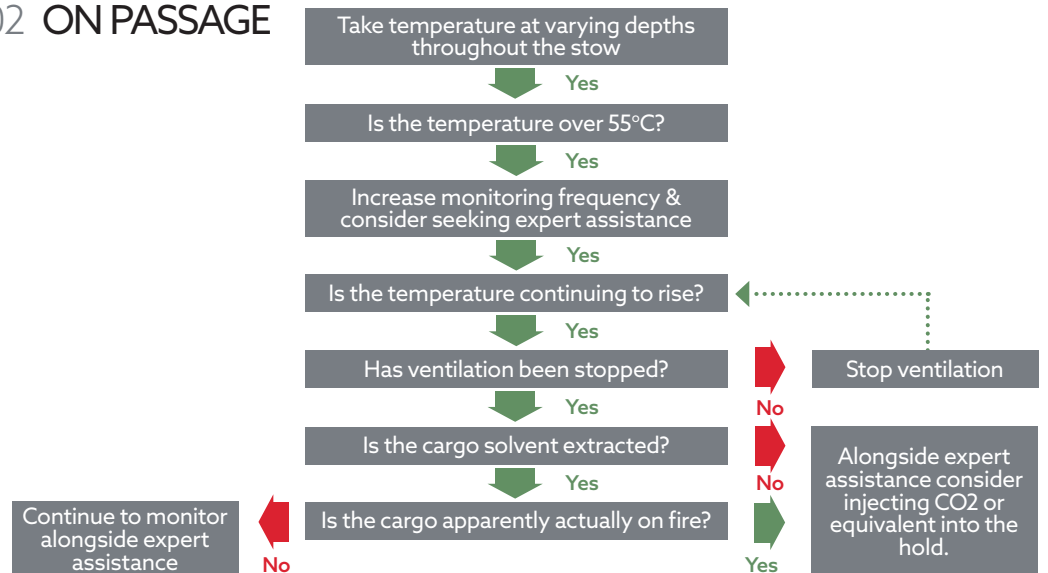
01 PRIOR TO LOADING

- Holds are clean and dry
- Hatches confirmed as weathertight
- Bilges are dry and non return valves confirmed as operational
- Cargo temperature immediately prior to loading not higher than either 55°C or the ambient temp +10°C, whichever is lower
- Risk assessment complete that considers all sources of ignition in the vicinity and measures in place to avoid dust ignition.
- Any blowers used should be earthed
- All piping electrically continuous or earthed
- Crew issued with PPE to protect against exposure to dust
- Hold lighting electrically isolated
- No smoking signs posted on deck
- Cargo hold vents fitted with spark arresting screens

Note:

Cargo should not be loaded in precipitation.

02 ON PASSAGE



Note:

Use surface ventilation as required to prevent sweat.

Warning

To prevent self heating, be cautious when using mechanical ventilation.

DO NOT enter holds or adjacent spaces until they are known to be safe!